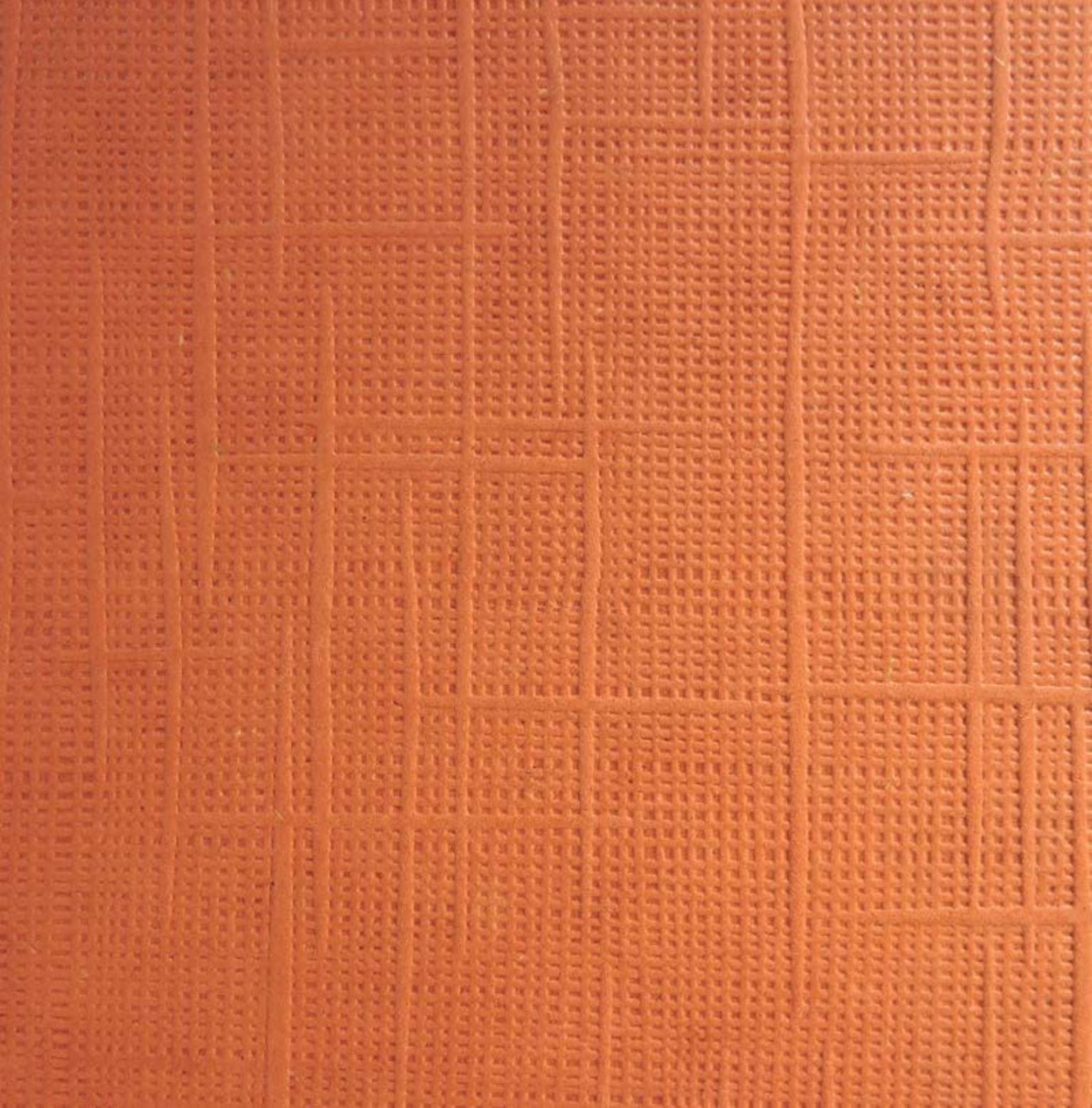


WWW.E-V-C.COM

Wood finished board





Product Introduction

Advantages

Product color card

SWTO analysis

Question

Case appreciation

Test report

Specifications

Enterprise brief introduction

Product architecture

Product Introduction

Material: Made of natural materials and high quality pine fiber

Specification: 12 mm / 5 mm / 9 mm / 15 mm / 18 19 mm - 1220 mm/mm x 2440 mm

Grade: In compliance with EO standards

1: indoor special materials

2: The use of environmental protection wood materials, to ensure quality products

3: With unique natural color and texture, can design interior decoration and a variety of three-dimensional patterns

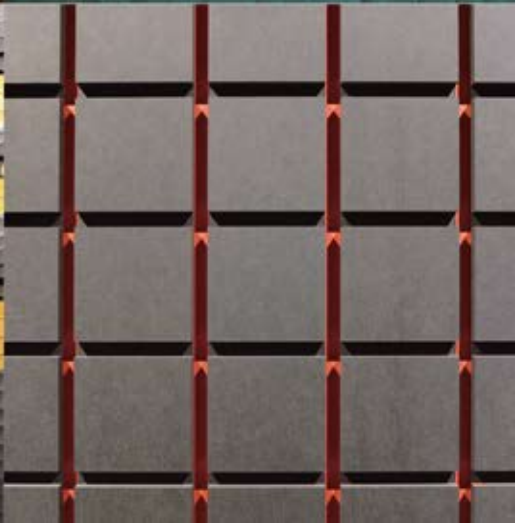
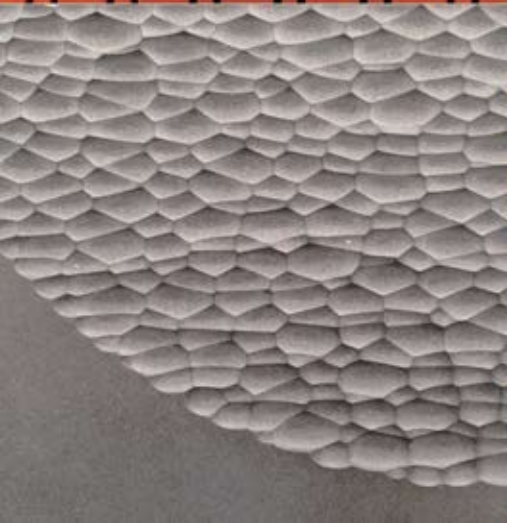
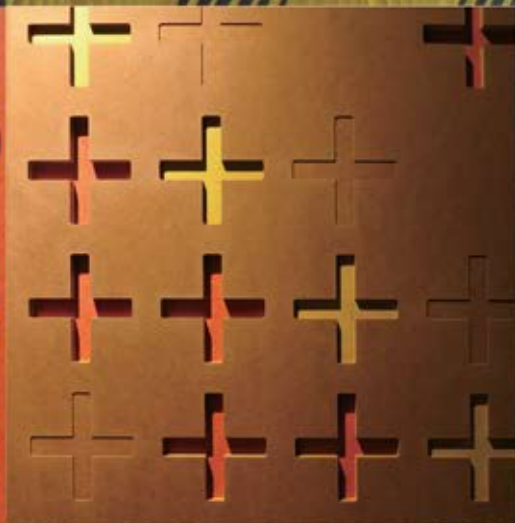
Applicable space: B&B, bar, chain store, commercial space, home decoration, kitchen, bathroom

WOOD FINISHED BOARD



Advantages

- ①The color inside and outside is the same, and the color is the same after sawing and processing;
- ②Easy to install, can be carved, easy to repair;
- ③Using special environmental protection adhesive, moisture-proof, indoor special;
- ④Flame retardant function, can be customized absolute combustion products, easy to manage, not easy to pollute;
- ⑤With quality pine fiber texture, uniform density, easy processing.



Color card



black brown red

grey orange green

Light
grey yellow blue

WOOD FINISHED BOARD

SWOT analysis

1, quality advantage: environmental protection natural materials, flame retardant, easy to install, easy to process, long service life, can be customized according to demand;

2. Service advantage: non-Sen product scheduling and quantity service, product after-sales service;

3, feature advantage: stable performance, easy to manage after painting, not easy to pollute, internal and external color unity;

4, effect advantage: the style is matched, the color is soft, the texture is rich and delicate, can fully deduce the designer's creativity and concept

Collocation is more diverse.

W Disadvantages: Limited application scenarios, can only be used indoors, imported products are not in stock the construction period is uncertain.

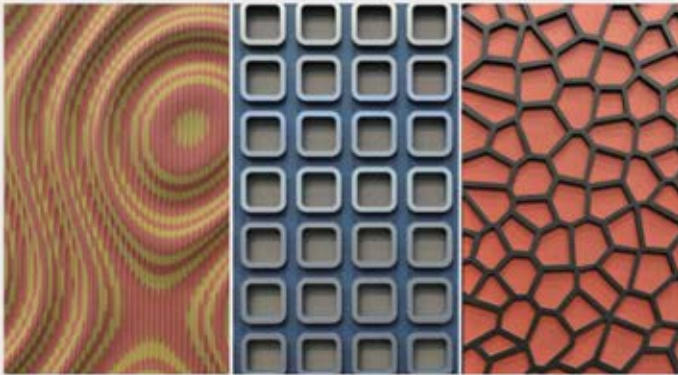
O Opportunities: Personalized products, a variety of processes, the whole color market rarely colliding styles.

T Threat: Not yet.

Display of craft

WOOD FINISHED BOARD

Three dimensional carving



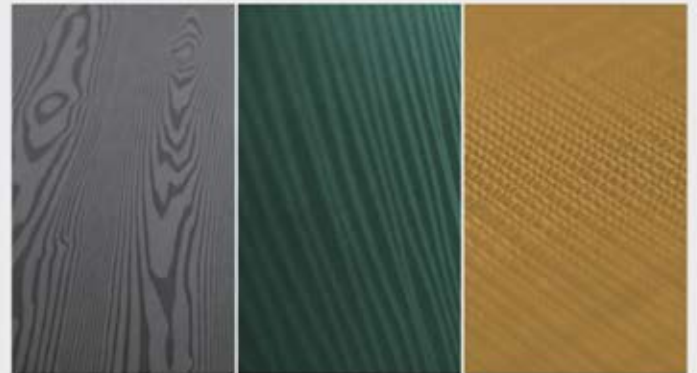
Laser cut



Digital print



Texture pattern



01 **How is it processed?**
Processing and ordinary wood board, can do surface treatment.

02 **What kind of paint can be used on the surface?**
In addition to PU and UV paints, general wood board paints can be used (natural oil, WAX, polish)

03 **Is the surface treatable?**
In order to produce more high quality, prevent pollution, can be recommended for surface paint treatment.

04 **Will the product deform?**
Same as any other sheet. If the treatment is not good, it will be affected by environmental factors and bring deformation.

05 **Can it be used outdoors?**
It's an indoor product.

06 **Does the product have color difference?**
Due to the use of natural wood fiber and vegetable dyes, there will be some color difference to some extent, only in the same batch production will not have color difference problems, and at the same time, we will try to improve the study of color difference problems

07 **Can you repair the scratch?**
Surface sanding can be done again.

08 **Is the product harmful to human health?**
The color palette is made of natural vegetable dyes and E0 environmental adhesive, which is harmless to human body.

SAMPLE PROJECTS

Volcanic rock

WOOD FINISHED BOARD

WWW.E-V-C.COM





WOOD FINISHED BOARD



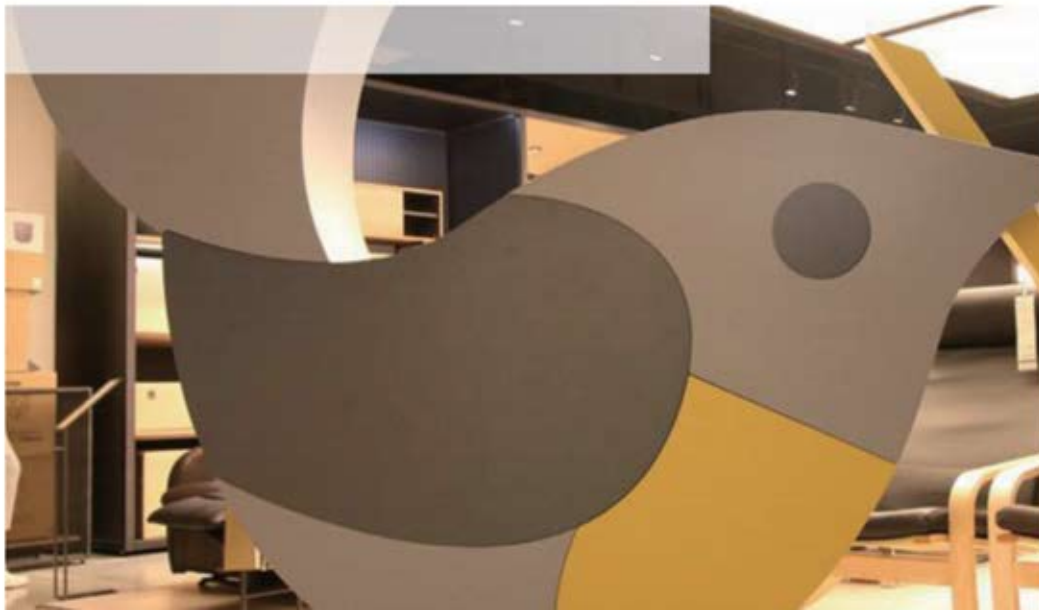








WOOD FINISHED BOARD





「Wood board construction instructions」

1. Precautions for wall construction

- 1) Must use gypsum board construction, gypsum board after the wooden frame, pasted a sheet of plywood after pasted color board. The middle plate of civil construction is more than 8 mm;
- 2) If the wall of the original board (1220mmX2440mm) is applied with I, the board and the board must comply with the space (brick joint construction)(the wood board with humidity difference can be expanded, and the place without humidity difference can be linked). 18 mm minimum 1mm above /9 mm minimum 3mm above /5 mm minimum 9mm above;
- 3) Matters to be observed during continuous wall construction
During construction, pay attention to confirm the direction of the upper and lower left and right, and then agree that it must be used uniformly. (if not, you can see the color difference);
- 4) During construction, please do not touch the product with contaminated gloves and wet hands. In case of contamination, please wring the wet cloth to wipe the contaminated part;
- 5) Please be careful not to make the adhesive stick to the surface of the product, it is recommended to treat the adhesive parts with dry cloth;
- 6) Please use vacuum cleaner or dry cloth for finishing cleaning after construction;
- 7) When there are slight scratches on the color board, please use 800 grinding paper to remove the stain with soaked cloth, extruded as far as possible, and pressed in the same direction to finish;
- 8) With color plate construction on the wall, it is recommended to use more than 9 mm;
- 9) If it is easy to clean, special water-based paint is recommended.



EVC
company

<http://www.e-v-c.com/>

Product architecture

custom wall panel	Ultra-thin stone	B series metal profile
Wooden plate	Volcanic Rocks	Aluminum foam
Commercial space veneer fire panels	Metal plated stone brick	Z series aluminum foam
Ultra clear mirror plate	Xuangu volcanic rock	Living moss
Plaster texture plate	Z series PU decorative panel	Creative modular custom products
Starry sky top acoustic board	H series PU large board	Mosaic of resin
Y series acrylic sheet	B series PU decorative panel	Y series creative module
Transparent art cement	PU decorative panel	Commercial special board
N-series cement casting plate	Fusion Cement member	H Series Outdoor flooring
C series soft stone	D series modeling brick	N series handmade brick
Art poured board	M series component bricks	Super black brick
Cement decorative board	K series foamed ceramics	Dupont paper
S series soft stone	K series crystal brick	Weaving of bamboo and rattan
3D cement brick	Hollow glass brick	The deep mirror
FRP cement casting plate	X series jade glass	Cement component lighting system
Microcement siding	T series crystal brick	PU component lighting system
Perlite board	J series water corrugated plate	D series foamed ceramics
Church art glass	Aluminum embossed plate	B series metal lines
X series hand sanded brick	FRP emerald grille	French textured paper
led photoglass (hard)	Outlet tile	

